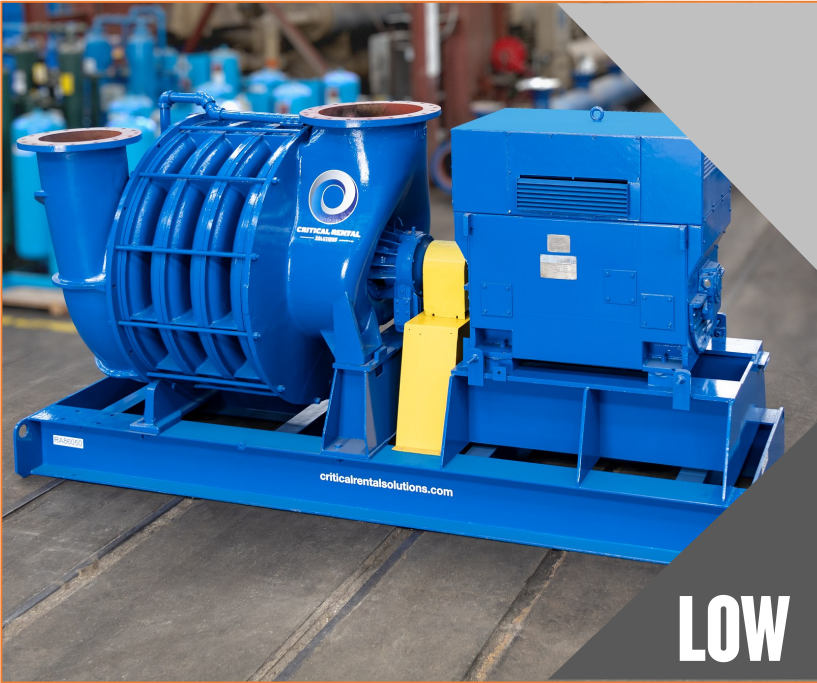




CRITICAL RENTAL
SOLUTIONS

MULTISTAGE CENTRIFUGAL BLOWER & EXHAUSTER LINE OVERVIEW



GENERAL INFORMATION

TYPE	Multistage Centrifugal
FLOW RANGE	200 to 20,000CFM
PRESSURE RANGE	18" Hg VAC – 15 PSIG
MAX TEMP RISE	280F
MIN/MAX AMBIENT	-10F/120F
DRIVE MOTOR RANGE	75 to 2,500 HP
MOTOR STARTER	DOL, Softstart, VFD
ELECTRICAL RATING	NEMA 4 & Hazardous
VOLTAGE	480/2300/4160
PROCESS MEDIUM	Air & Process Gas



The multistage centrifugal blower packages are specifically designed to provide a compact and complete self-contained air cooled unit offering a low noise solution for applications requiring a variable flow at fixed pressure. Our rentalized open frame skid design utilizes a rigid steel base offering ease of alignment as well as vibration free and continuous duty operation in air or process gas services in both hazardous and non-hazardous duty service.

Our packages include the following key enhancements:

- Heavy Duty Open Frame Skid with Fork Pockets & Lift Points
- Outdoor Modified
- Direct Drive with OSHA Approved Coupling Guard
- Inverter Duty rated premium efficiency TEFC drive motors
- Job Specific Drive Motors and Voltage Options
- Stand-Alone Motor Starter
- Option for VFD Control
- Option for Hazardous Duty Service
- Option for Inlet Filter/Silencers, Relief Valves, Discharge Silencers, In-Line Coolers
- Air & Process Gas Models Available

The multistage centrifugal design delivers oil-free air/gas that may be required for a wide range of processes and environments with high reliability, high efficiency along with low installation and maintenance requirements. This equipment is widely used in the water treatment, combustion air, vacuum, fluidizing, aeration, drying, gas compression among many industries.